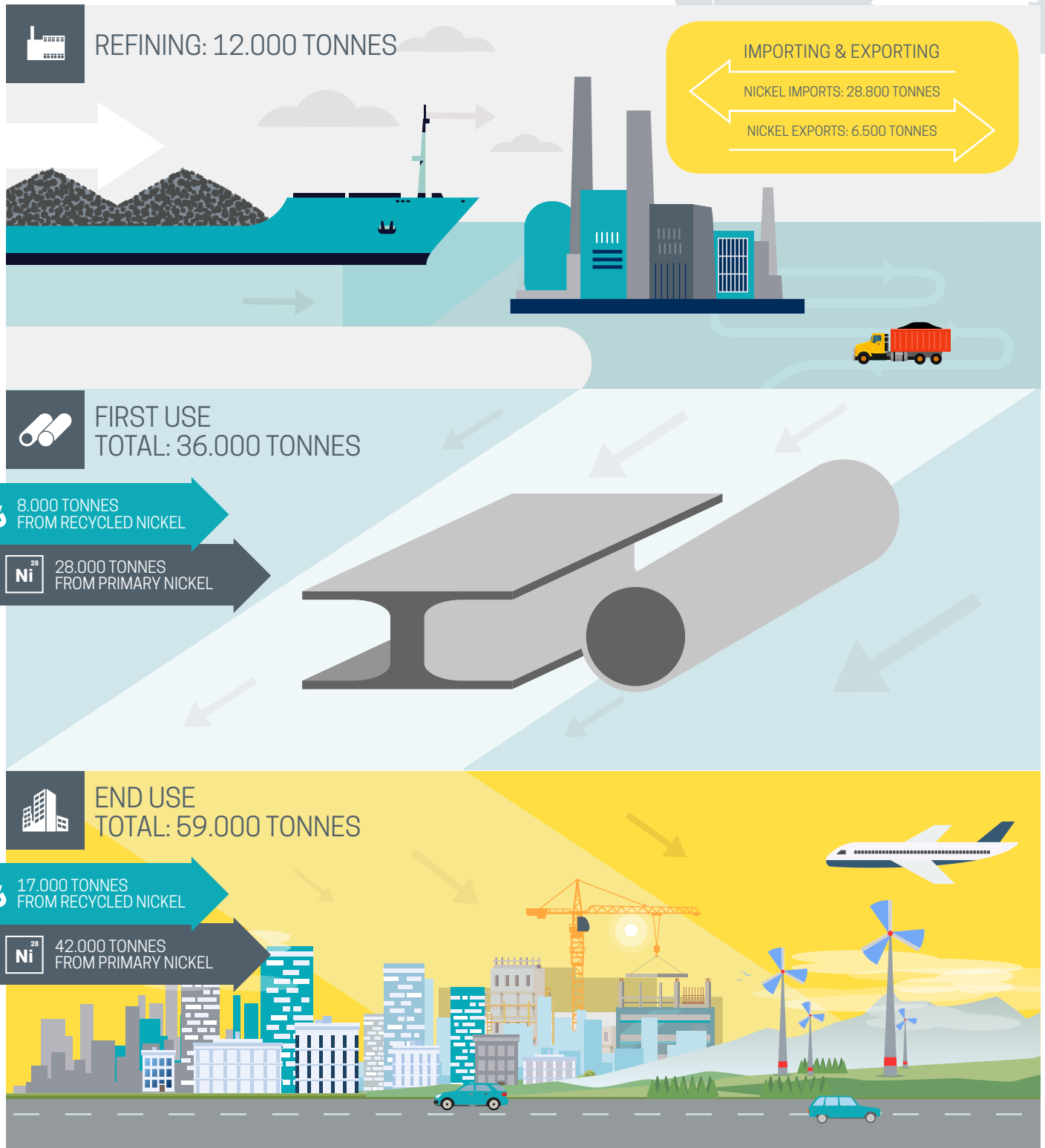


Nickel in Europe

FRANCE

OVERALL TONNAGES: 107.000 TONNES



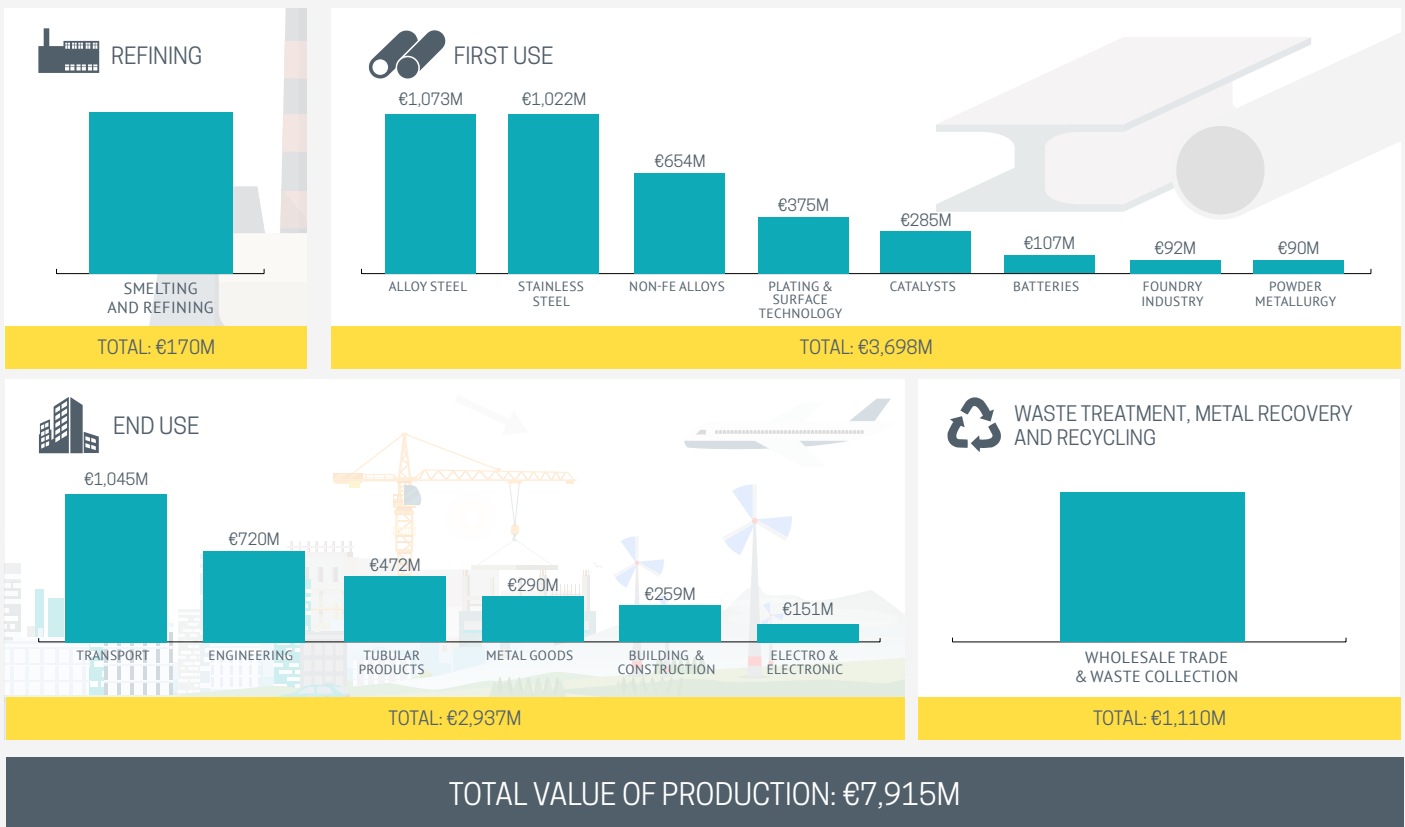
DEFINITIONS

First use of nickel: Conversion of nickel into intermediate products, such as stainless steel and alloys, which form the basis for nickel-containing end use goods.

End use of nickel: Conversion of first use nickel products into final nickel-containing goods used in wide range of end use sectors, for instance building and construction, medical devices, batteries, electrical and electronic equipment, kitchen equipment and food processing, industrial equipment, transport & aerospace.

Economic parameters

ESTIMATED ANNUAL VALUE OF PRODUCTION*



* The production value is defined as turnover, plus or minus the changes in stocks of finished products, work in progress and goods and services purchased for resale, minus the purchases of goods and services for resale, plus capitalised production, plus other operating income (excluding subsidies) – Eurostat. Based on 2014 data.

JOBS

■ Direct jobs ■ Indirect jobs

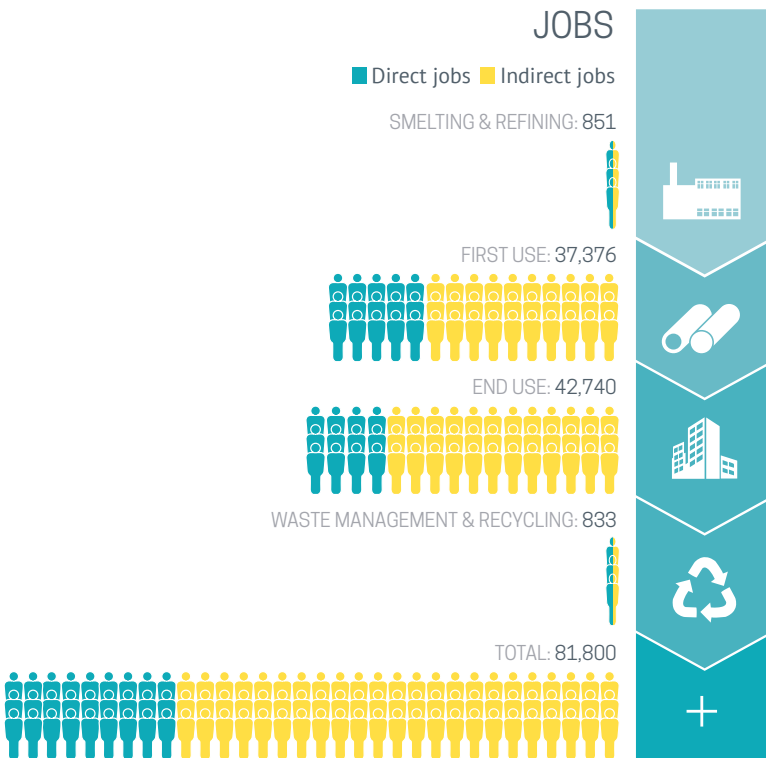
SMELTING & REFINING: 851

FIRST USE: 37,376

END USE: 42,740

WASTE MANAGEMENT & RECYCLING: 833

TOTAL: 81,800



ESTIMATED ANNUAL VALUE ADDED*

■ Indirect value added ■ Direct value added

SMELTING & REFINING: N/A

FIRST USE: €2,654M

END USE: €2,311M

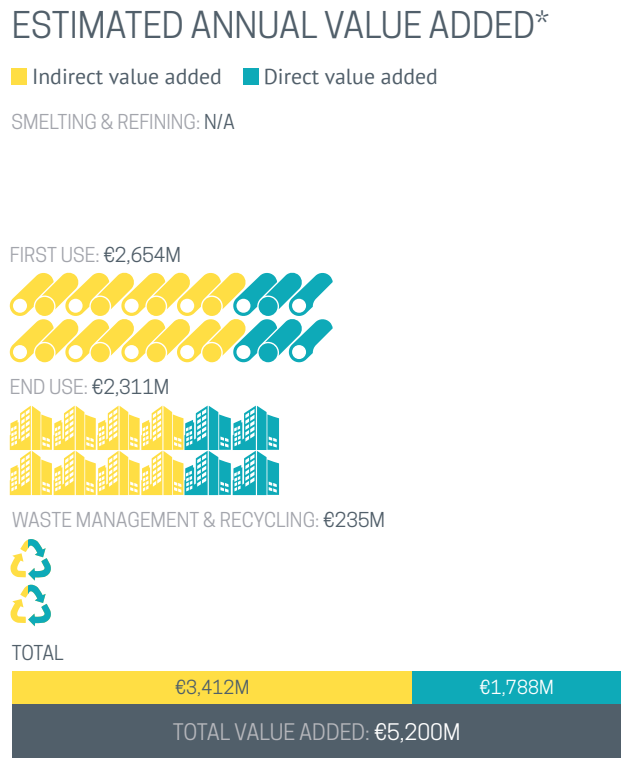
WASTE MANAGEMENT & RECYCLING: €235M

TOTAL

€3,412M

€1,788M

TOTAL VALUE ADDED: €5,200M



* Value added at factor cost is the gross income from operating activities after adjusting for operating subsidies and indirect taxes. [...] It can be calculated from gross operating surplus by adding personnel costs – Eurostat. Based on 2014 data.*

Sources

Based on Socio-Economic Analysis of Nickel in the EEA: Database and Evaluation tool, Dr. Ying Zhu et al., ReachLaw & Dr. Gerhard C. Pariser, Heinz H. Pariser Alloy Metals & Steel Market Research, 2016-7
Material has been prepared for the general information of the reader and should not be used or relied upon for specific applications without first securing competent advice. While the material is believed to be technically correct, Nickel Institute, its members, staff and consultants do not represent or warrant its suitability for any general or specific use and assume no liability or responsibility of any kind in connection with the information herein. For the sake of consistency, numbers mentioned in this factsheet may have been rounded.
Copyright © Nickel Institute 2018. All rights reserved